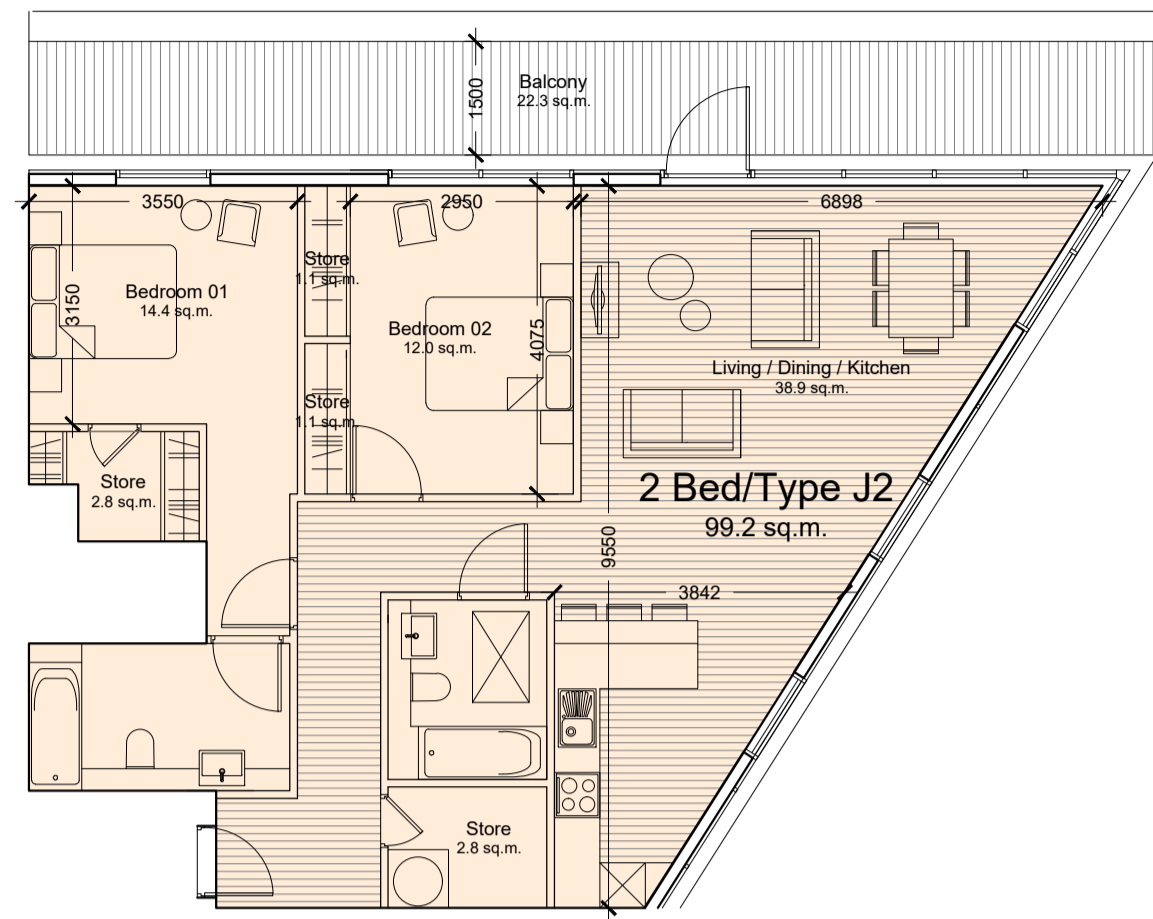
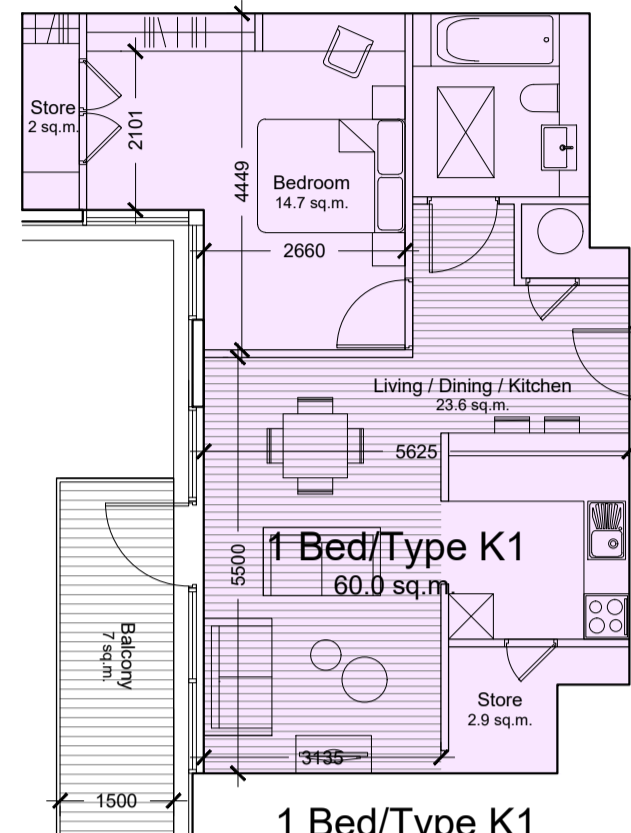


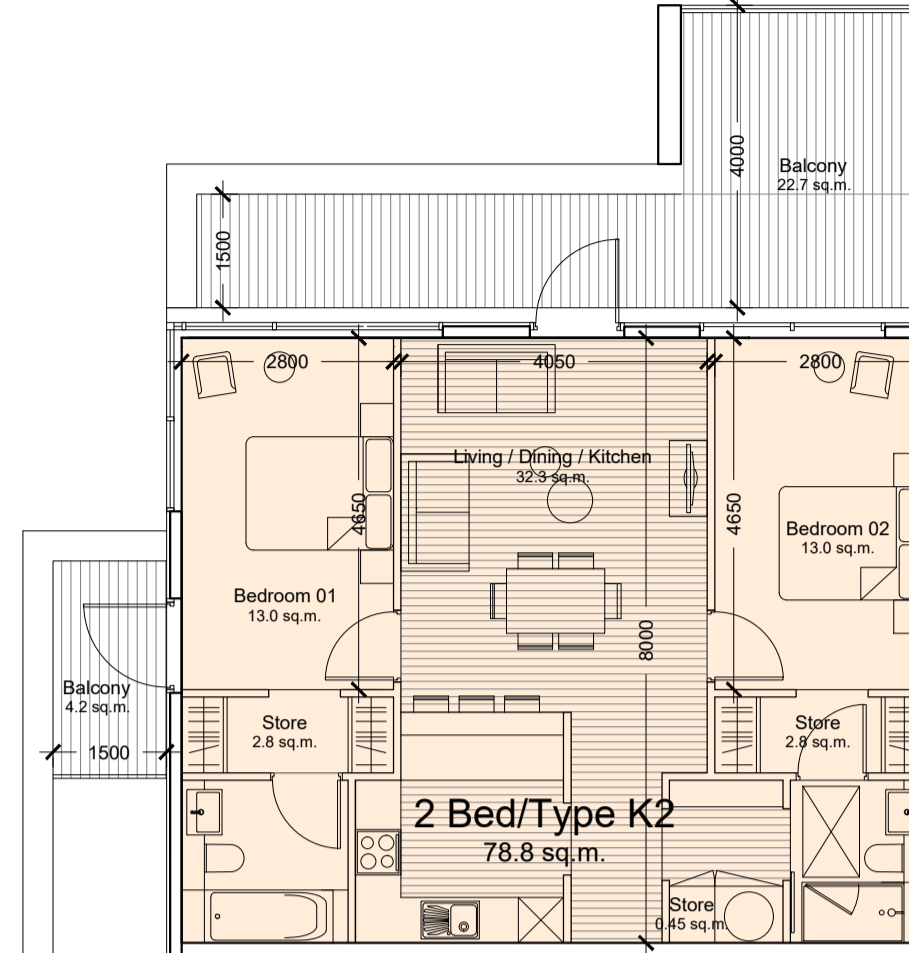
1 Bed/Type J1
50 sq.m.
Total No. = 1
(4th floor)



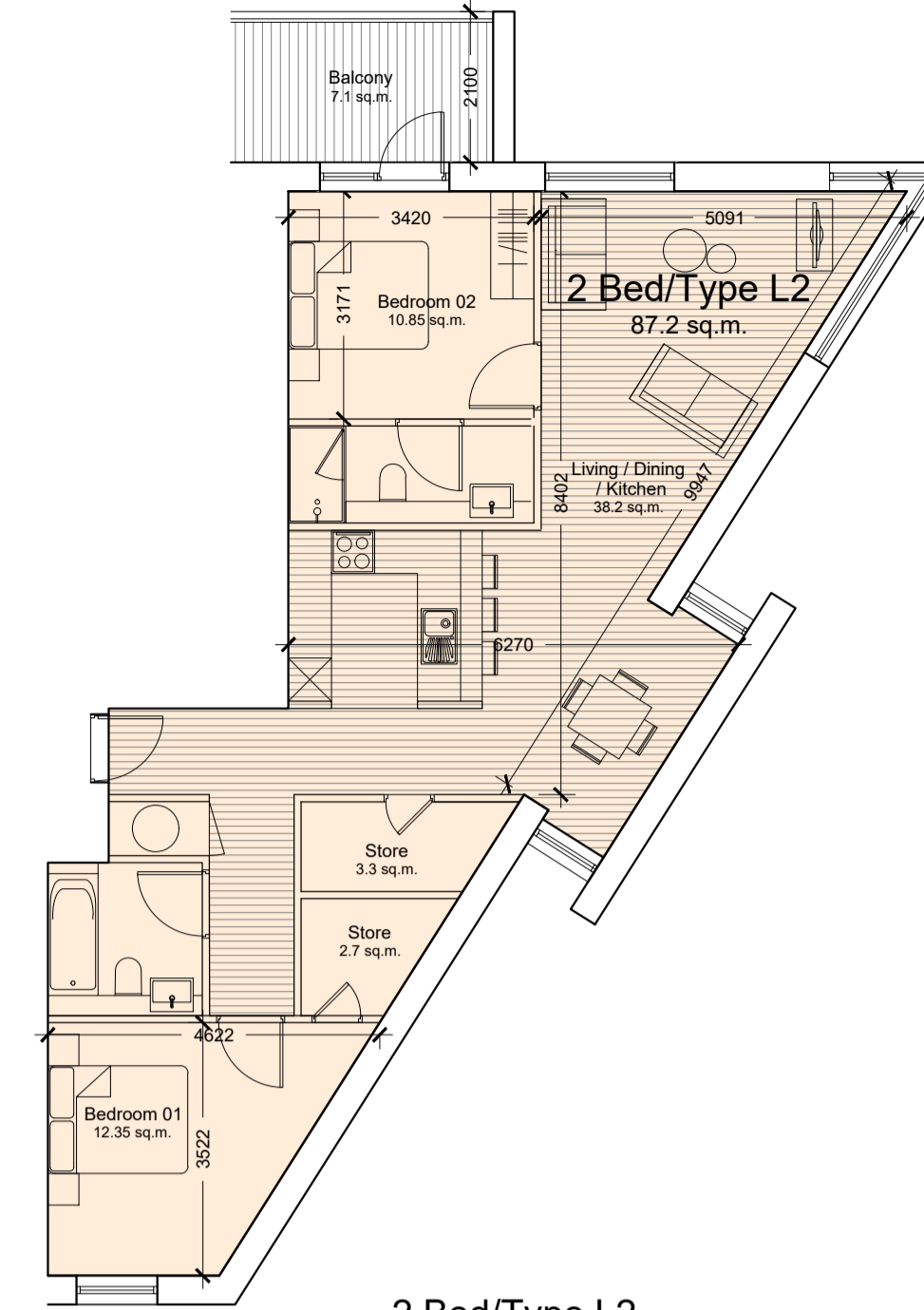
2 Bed/Type J2
99.2 sq.m.
Total No. = 1 (5th floor)



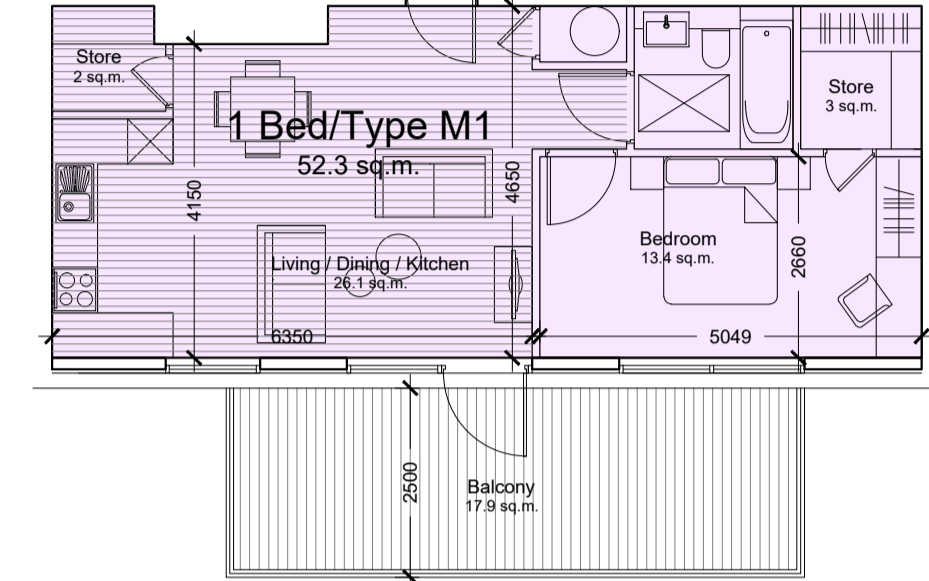
1 Bed/Type K1
60.0 sq.m.
Total No. = 1
(5th floor)



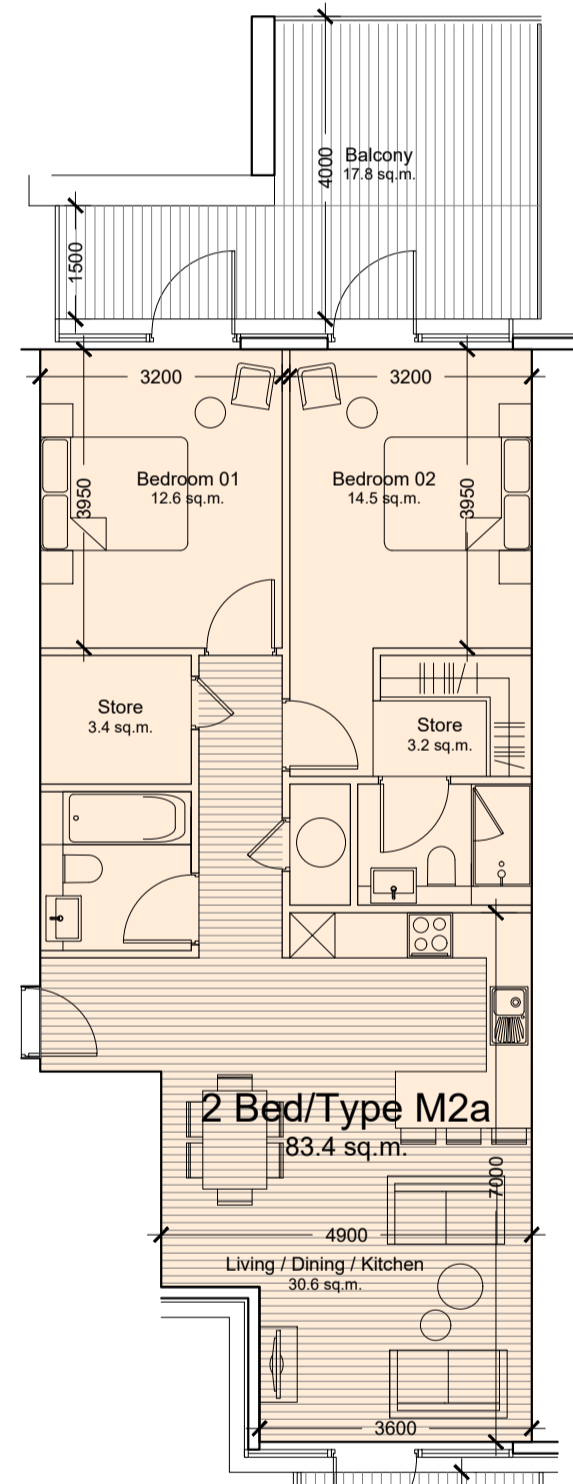
2 Bed/Type K2
78.8 sq.m.
Total No. = 1 (5th floor)



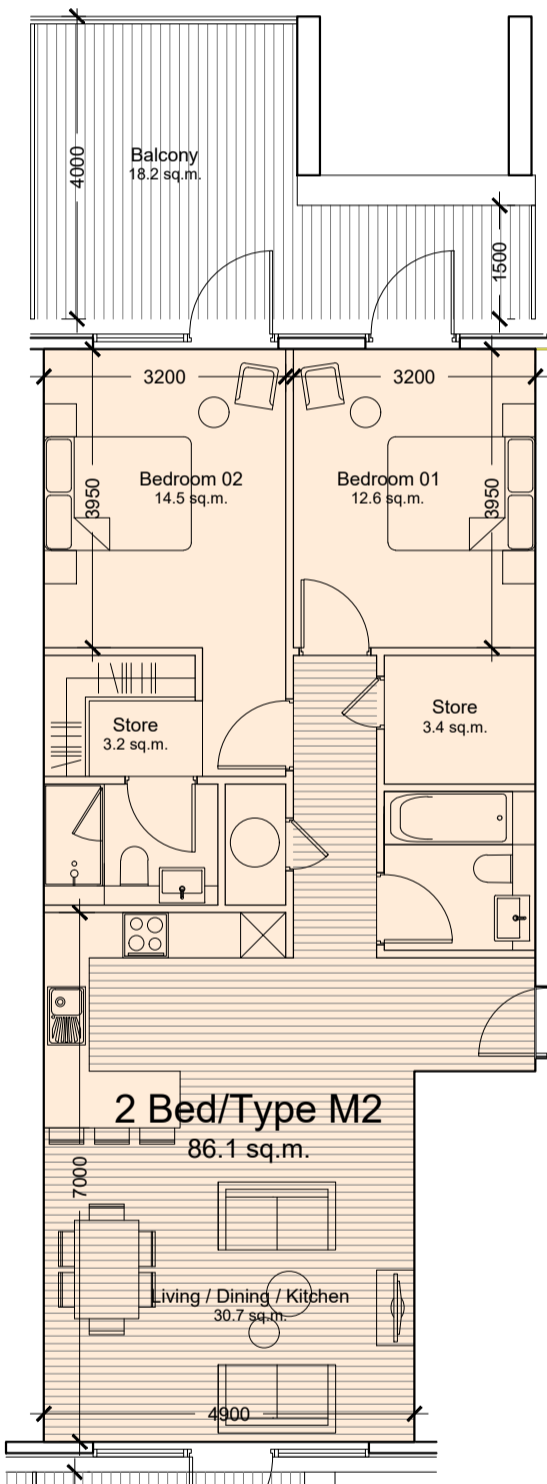
2 Bed/Type L2
87.2 sq.m.
Total No. = 1 (4th floor)



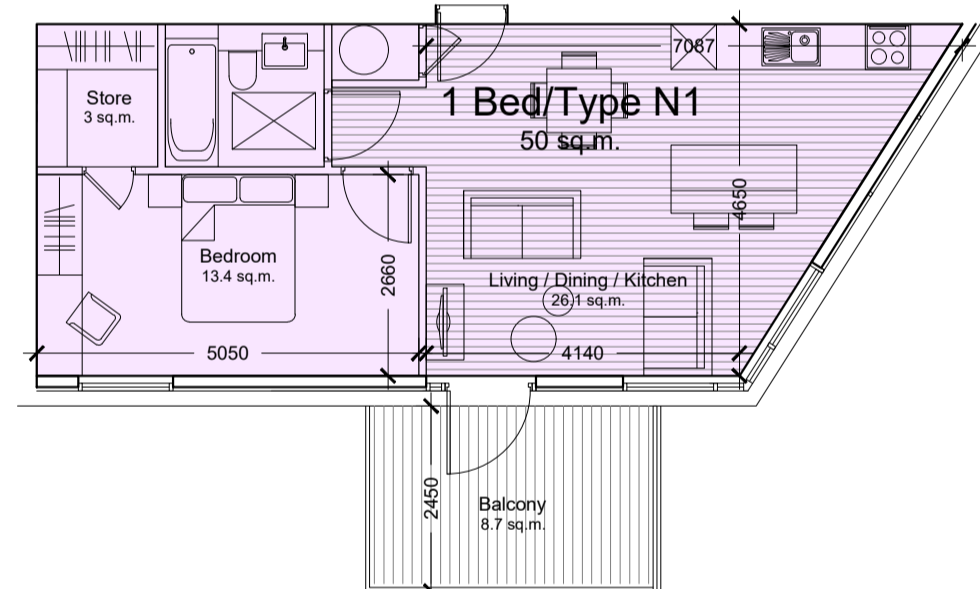
1 Bed/Type M1
52.3 sq.m.
Total No. = 1 (5th floor)



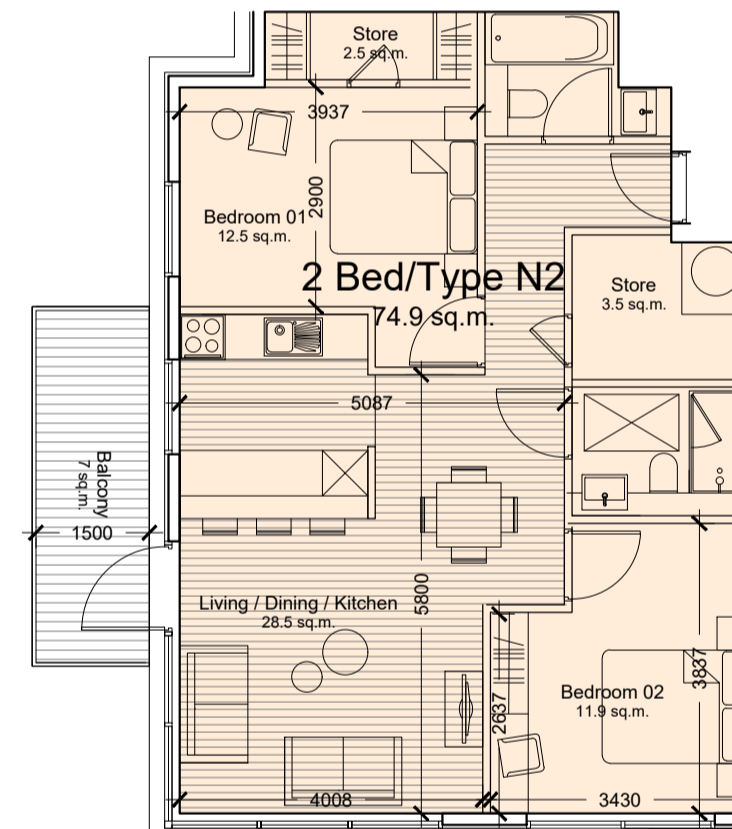
2 Bed/Type M2a
83.4 sq.m.
Total No. = 1 (5th floor)



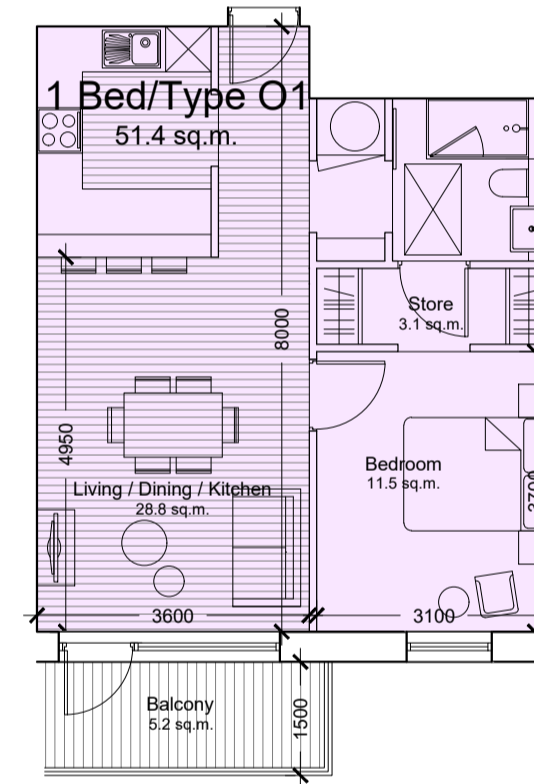
2 Bed/Type M2
86.1 sq.m.
Total No. = 1 (5th floor)



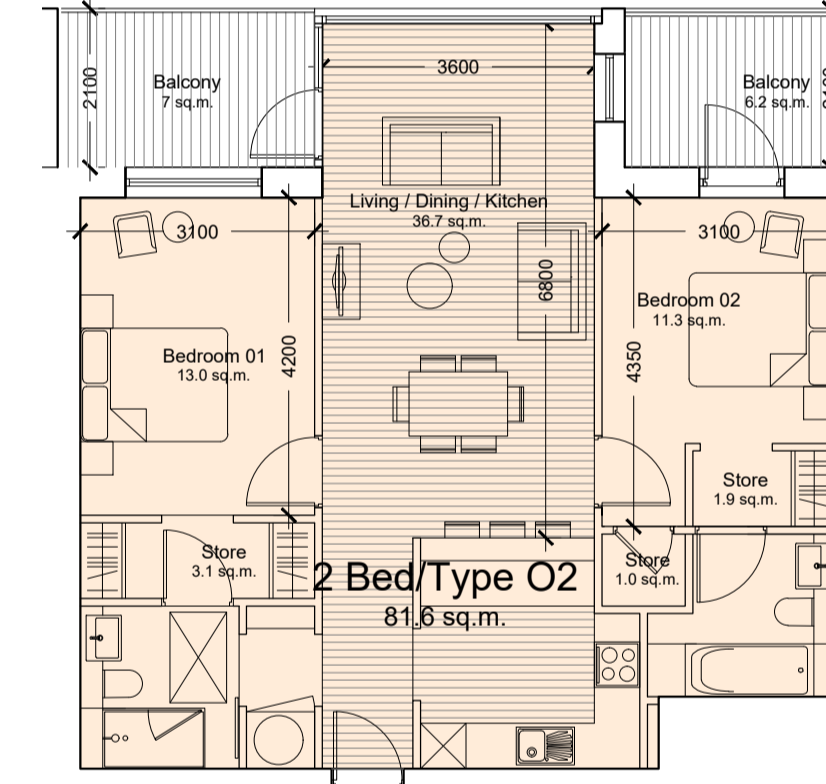
1 Bed/Type N1
50 sq.m.
Total No. = 1 (5th floor)



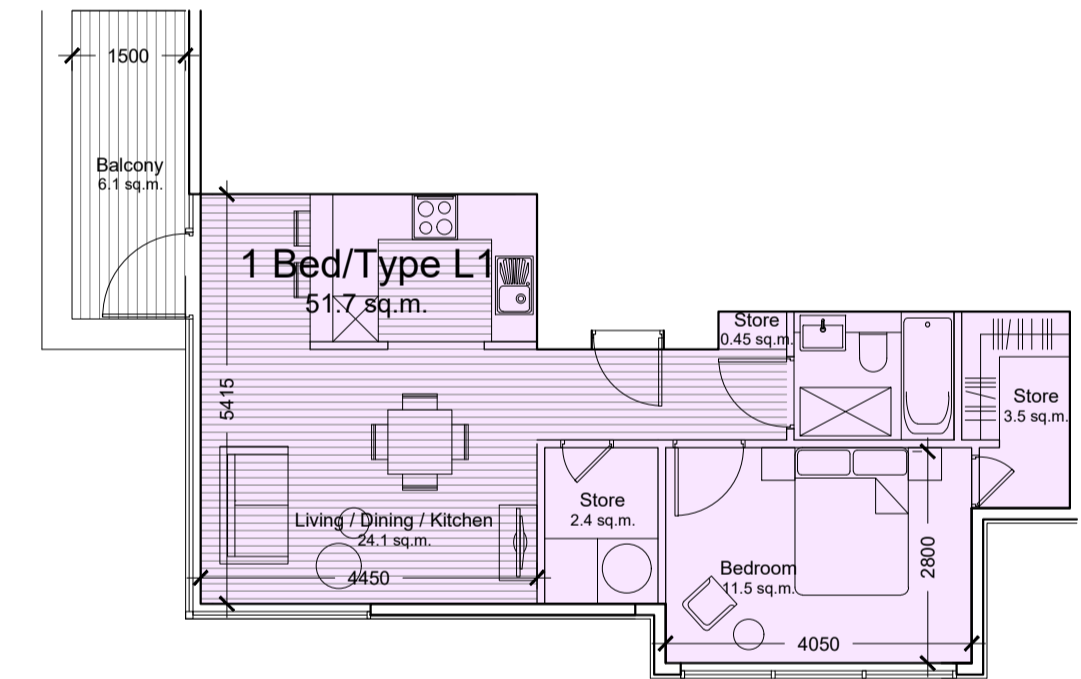
2 Bed/Type N2
74.9 sq.m.
Total No. = 2



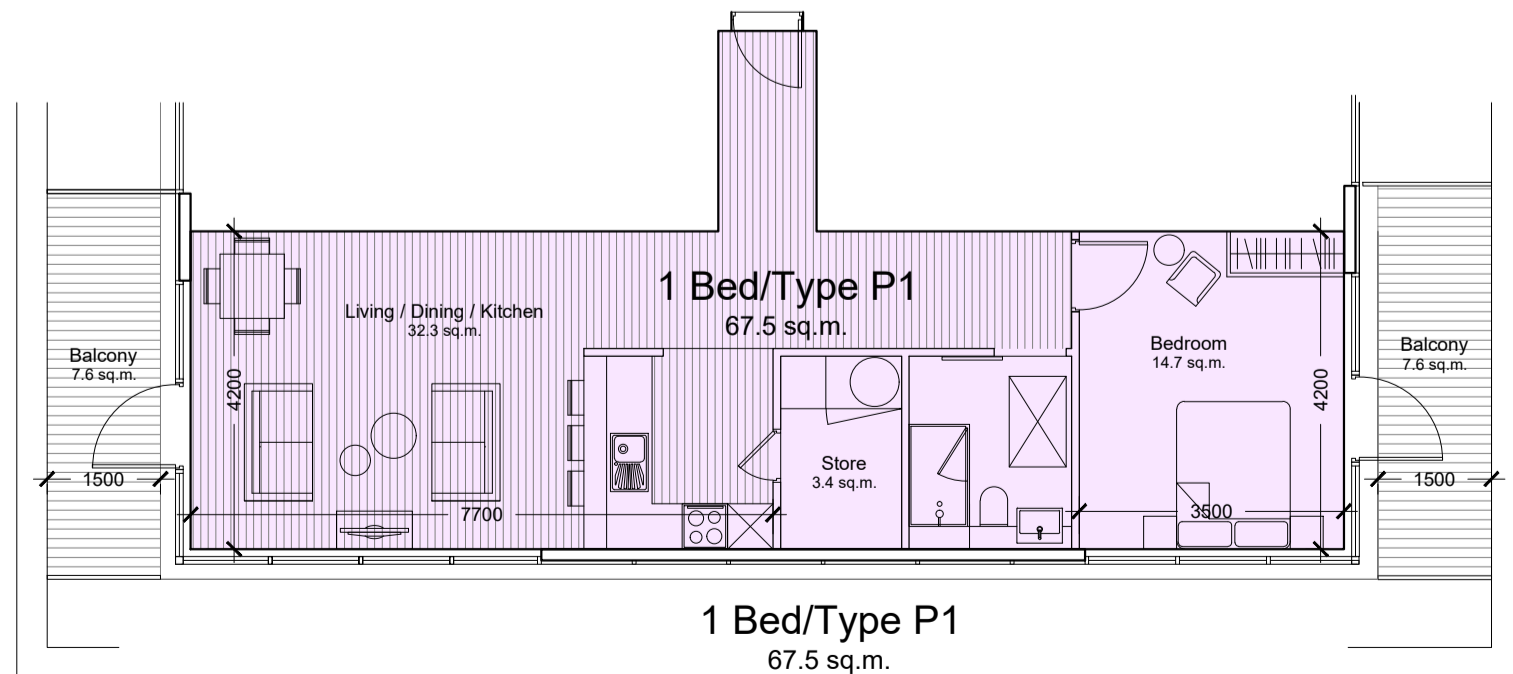
1 Bed/Type O1
51.4 sq.m.
Total No. = 8



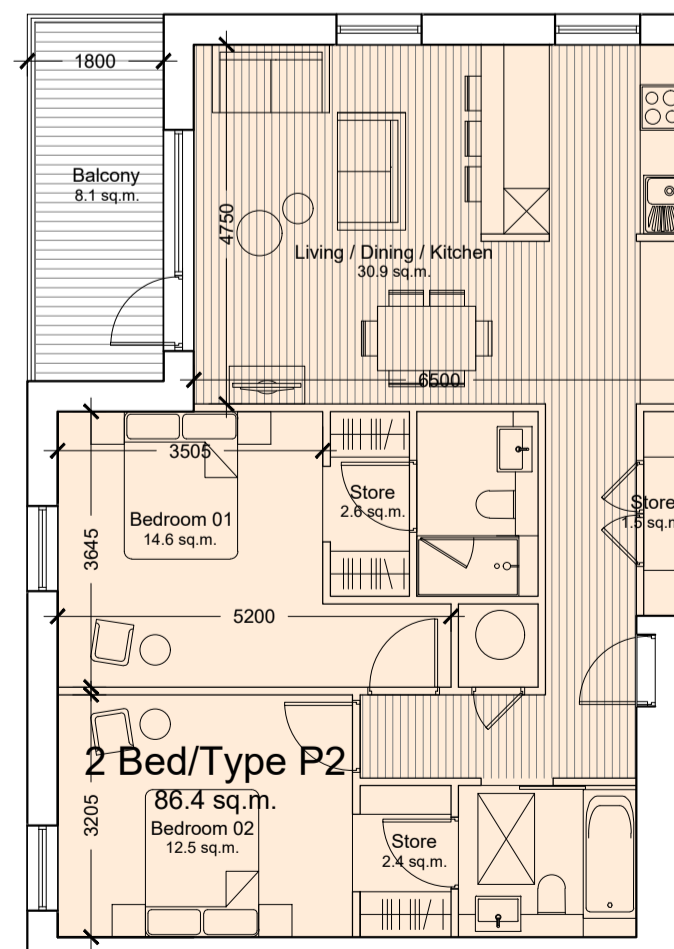
2 Bed/Type O2
81.6 sq.m.
Total No. = 5



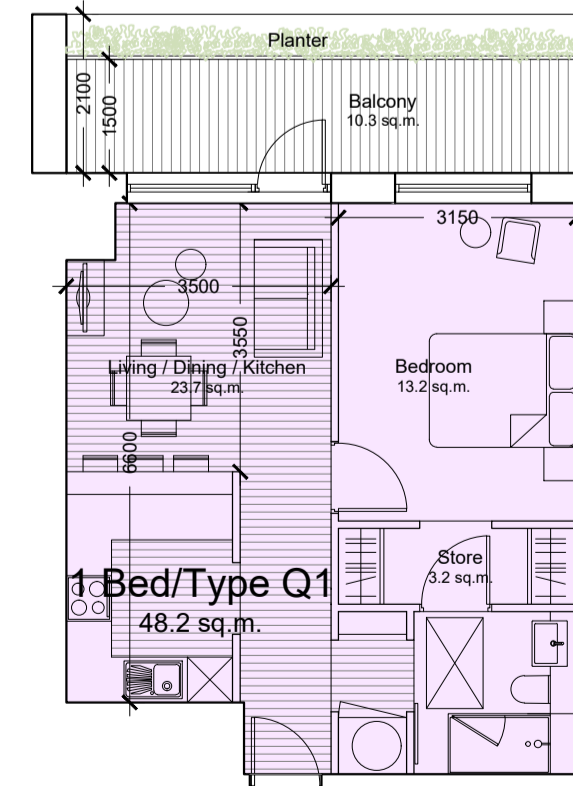
1 Bed/Type L1
51.7 sq.m.
Total No. = 1 (5th floor)



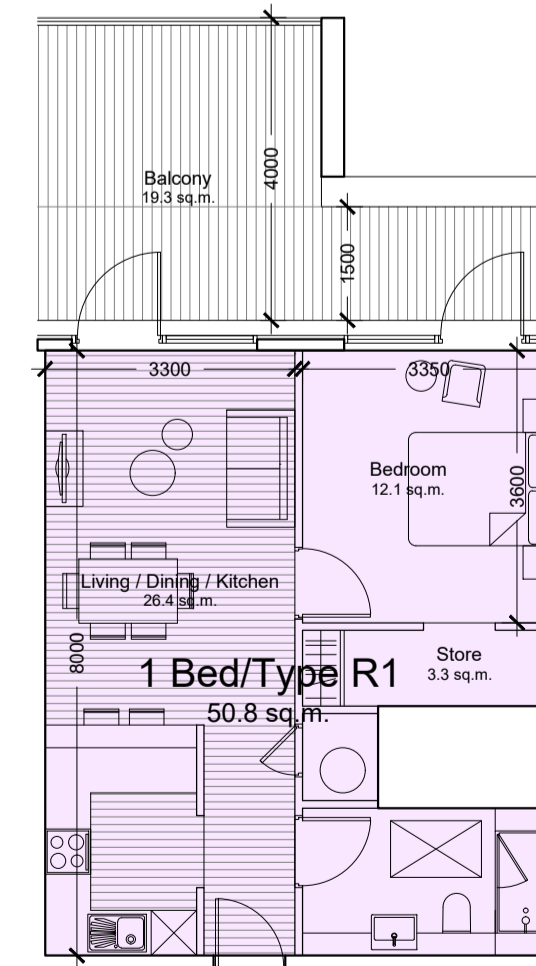
1 Bed/Type P1
67.5 sq.m.
Total No. = 1 (4th floor)



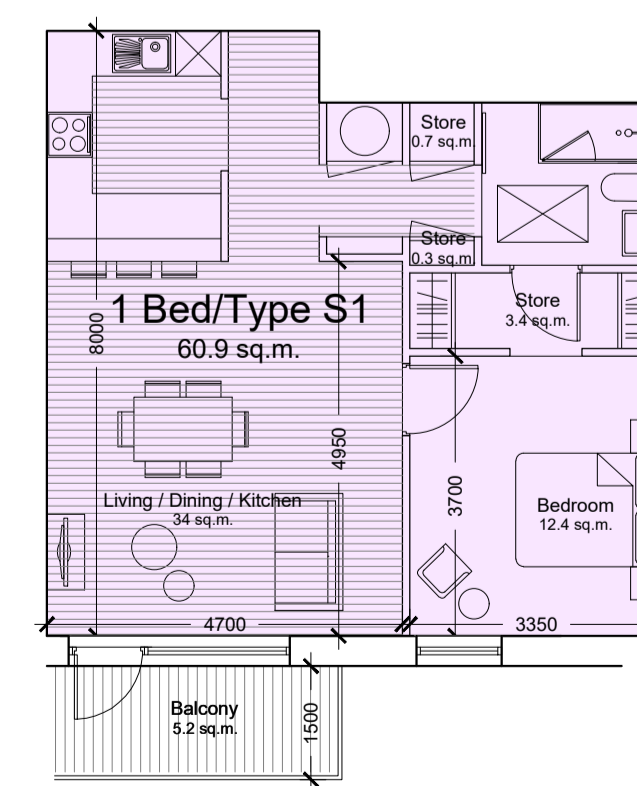
2 Bed/Type P2
86.4 sq.m.
Total No. = 1
(4th floor)



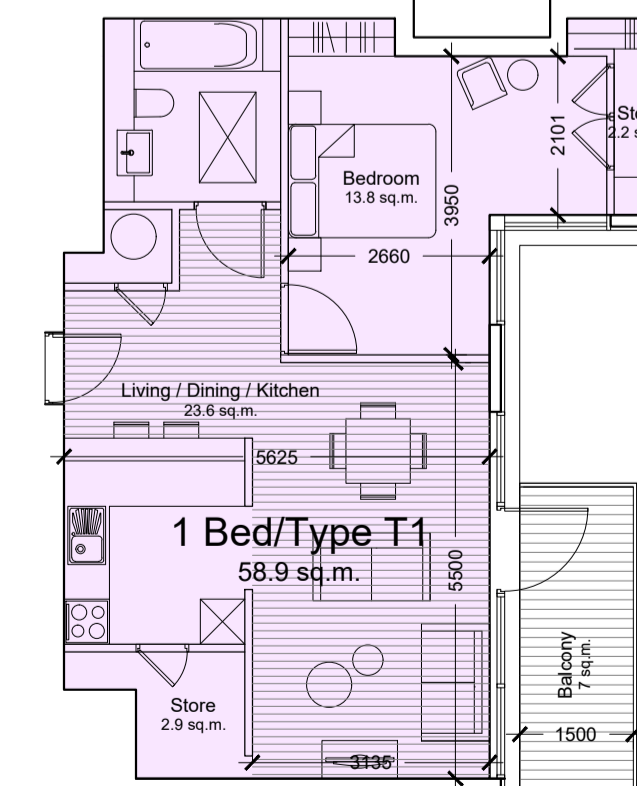
1 Bed/Type Q1
48.2 sq.m.
Total No. = 2



1 Bed/Type R1
50.8 sq.m.
Total No. = 1 (5th floor)



1 Bed/Type S1
60.9 sq.m.
Total No. = 1
(Ground floor)



1 Bed/Type T1
58.9 sq.m.
Total No. = 1
(5th floor)

- GENERAL NOTES**
1. COPYRIGHT RESERVED
 2. DO NOT SCALE DRAWING. USE FIGURED DIMENSIONS ONLY.
 3. ALL DISCREPANCIES TO BE REPORTED TO ARCHITECT.
 4. THE CONTRACTOR IS RESPONSIBLE FOR CHECKING ALL LEVELS AND DIMENSIONS.
 5. ALL STRUCTURE TO BE TO STRUCTURAL ENGINEERS DETAILS.
 6. ALL MECHANICAL SERVICES TO SERVICES ENGINEERS DETAILS.
 7. ALL PROPRIETARY ITEMS TO BE INSTALLED IN ACCORDANCE WITH MANUFACTURERS INSTRUCTIONS.
 8. CONTRACTOR IS RESPONSIBLE FOR THE COORDINATION OF STRUCTURE FINISHES AND SERVICES.

REV	DATE	DESCRIPTION	BY

- Notes:**
- Private open space varies. Refer to plans and Housing Quality Assessment.
 - Refer to layout plan for each apartment orientation.
 - Refer to plans for each apartment level.
 - Refer to Housing Quality Assessment for detailed information.

JOHN FLEMING ARCHITECTS
THE TREE HOUSE, 17 RICHVIEW OFFICE PARK, DUBLIN 14
T: (01) 6669888 E: info@jfa.ie W: www.jfa.ie

CLIENT
Maxol Property Limited

PROJECT
Beach Road Apartments
Maxol Petrol Filling Station & former Michael Grant Motors, Beach Road, D4

DRAWING
Apartment Types

SCALE 1:100@A1 JOB NO. 1738
DRAWN BY IC
DATE May 2021 REVISION
DRAWING NUMBER P-9-101

DRAWING LOCATION
c:\users\jfa\desktop\working from home\1738.dwg

DRAWING STATUS
PLANNING

