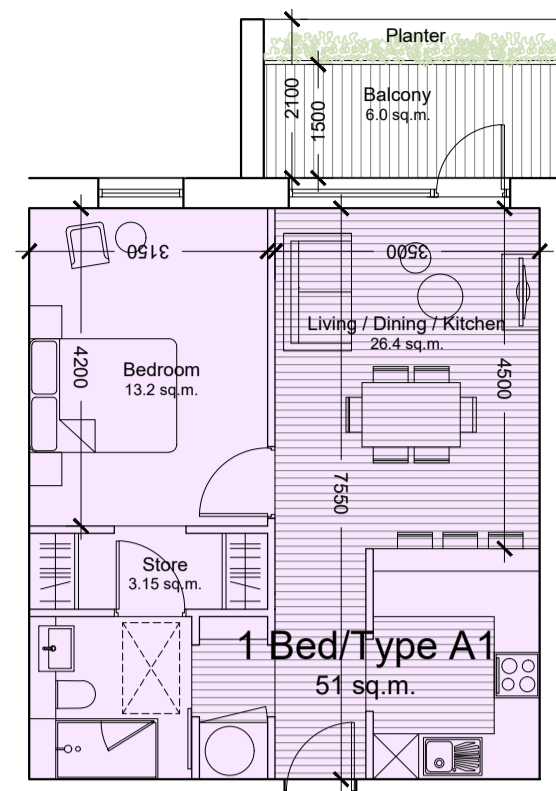


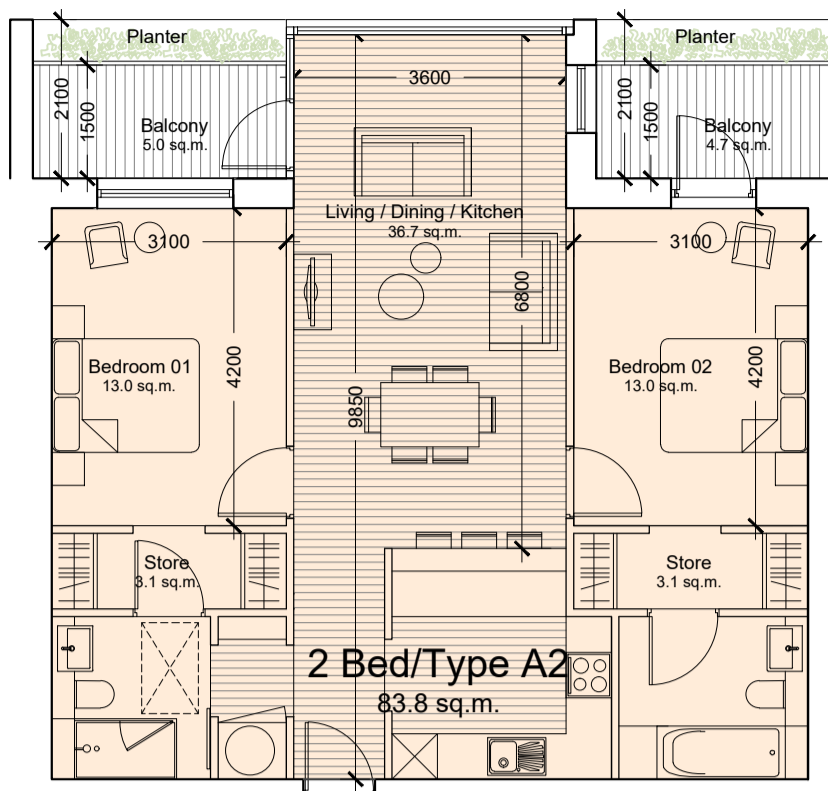
- GENERAL NOTES**
1. COPYRIGHT RESERVED
  2. DO NOT SCALE DRAWING. USE FIGURED DIMENSIONS ONLY.
  3. ALL DISCREPANCIES TO BE REPORTED TO ARCHITECT.
  4. THE CONTRACTOR IS RESPONSIBLE FOR CHECKING ALL LEVELS AND DIMENSIONS.
  5. ALL STRUCTURE TO BE TO STRUCTURAL ENGINEERS DETAILS.
  6. ALL MECHA/ELEC SERVICES TO BE SERVICES ENGINEERS DETAILS.
  7. ALL PROPRIETARY ITEMS TO BE INSTALLED IN ACCORDANCE WITH MANUFACTURERS INSTRUCTIONS.
  8. CONTRACTOR IS RESPONSIBLE FOR THE COORDINATION OF STRUCTURE FINISHES AND SERVICES.

REV	DATE	DESCRIPTION	BY

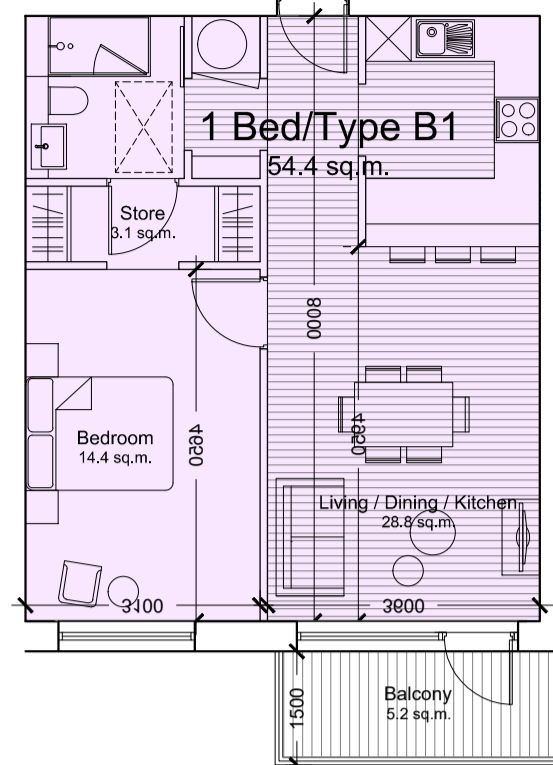
- Notes:**
- Private open space varies. Refer to plans and Housing Quality Assessment.
  - Refer to layout plan for each apartment orientation.
  - Refer to plans for each apartment level.
  - Refer to Housing Quality Assessment for detailed information.



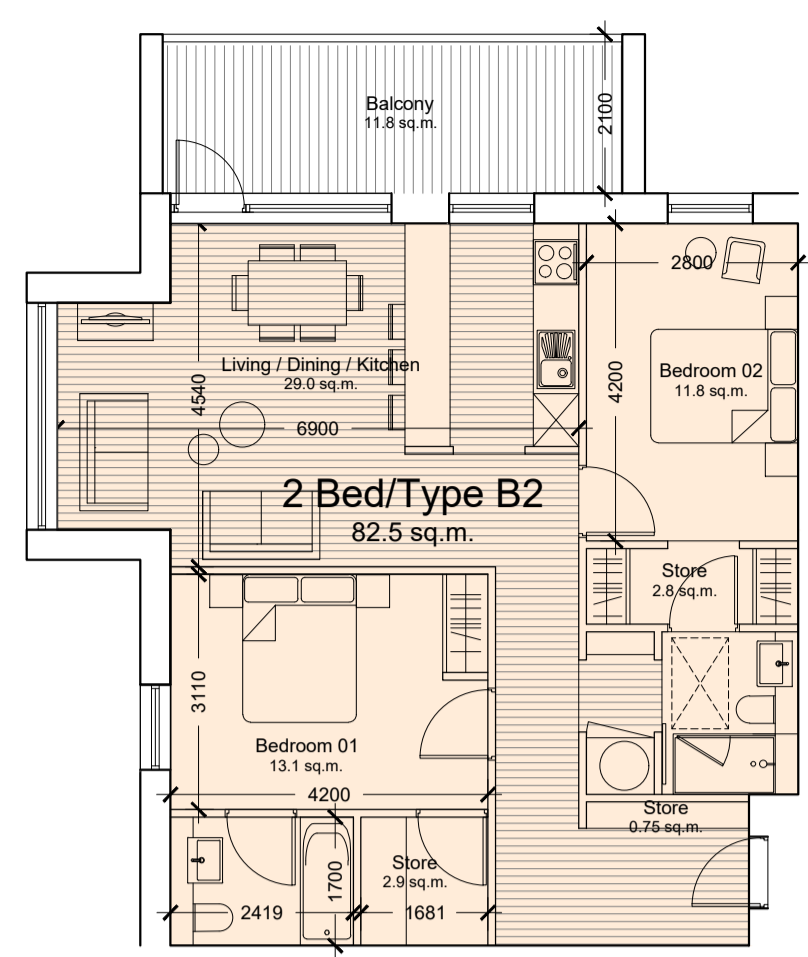
**1 Bed/Type A1**  
51 sq.m.  
Total No.= 4



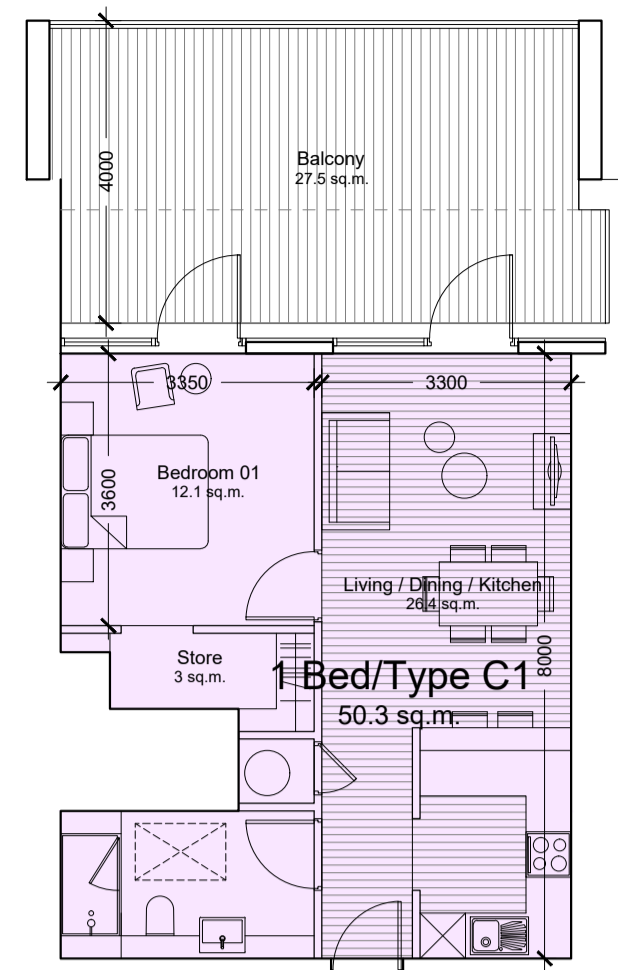
**2 Bed/Type A2**  
83.8 sq.m.  
Total No.= 5



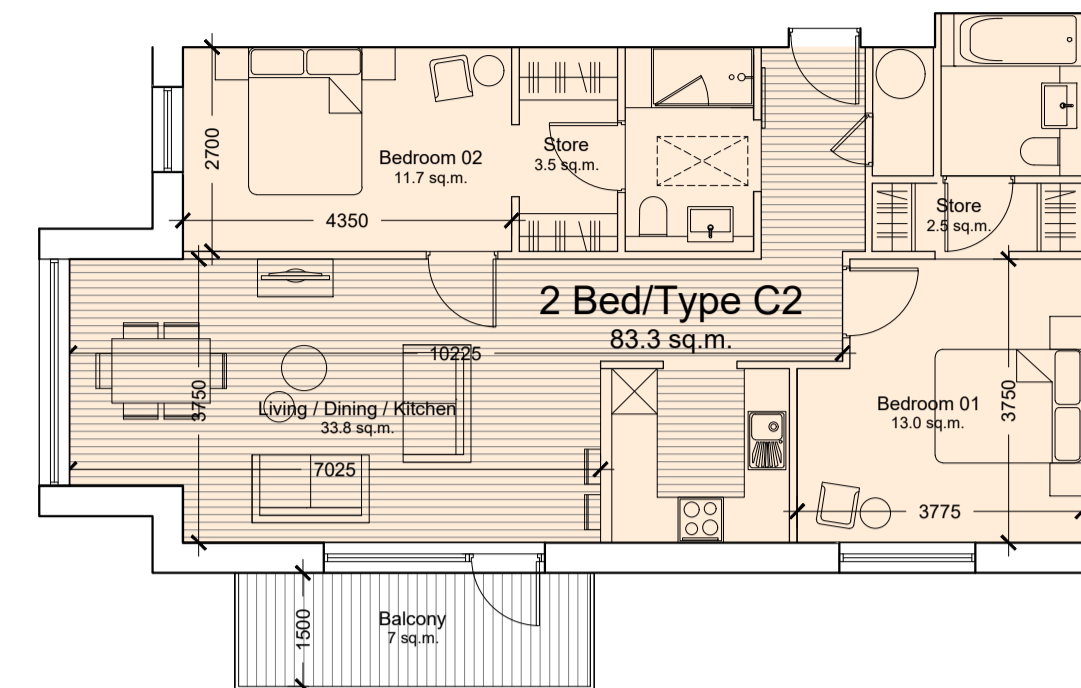
**1 Bed/Type B1**  
54.4 sq.m.  
Total No.= 9



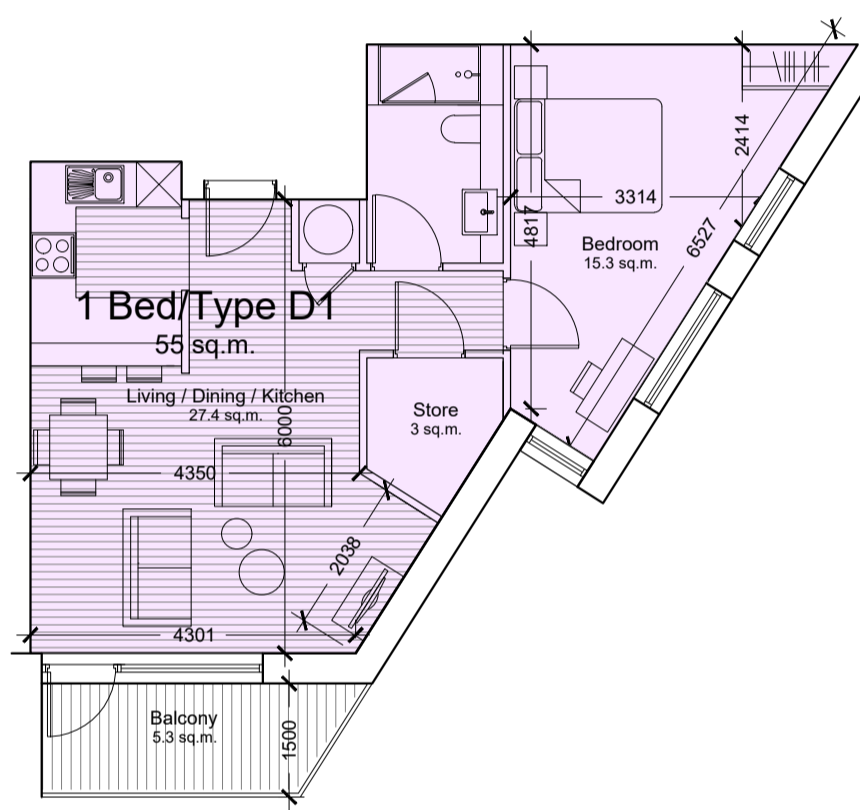
**2 Bed/Type B2**  
82.5 sq.m.  
Total No.= 4



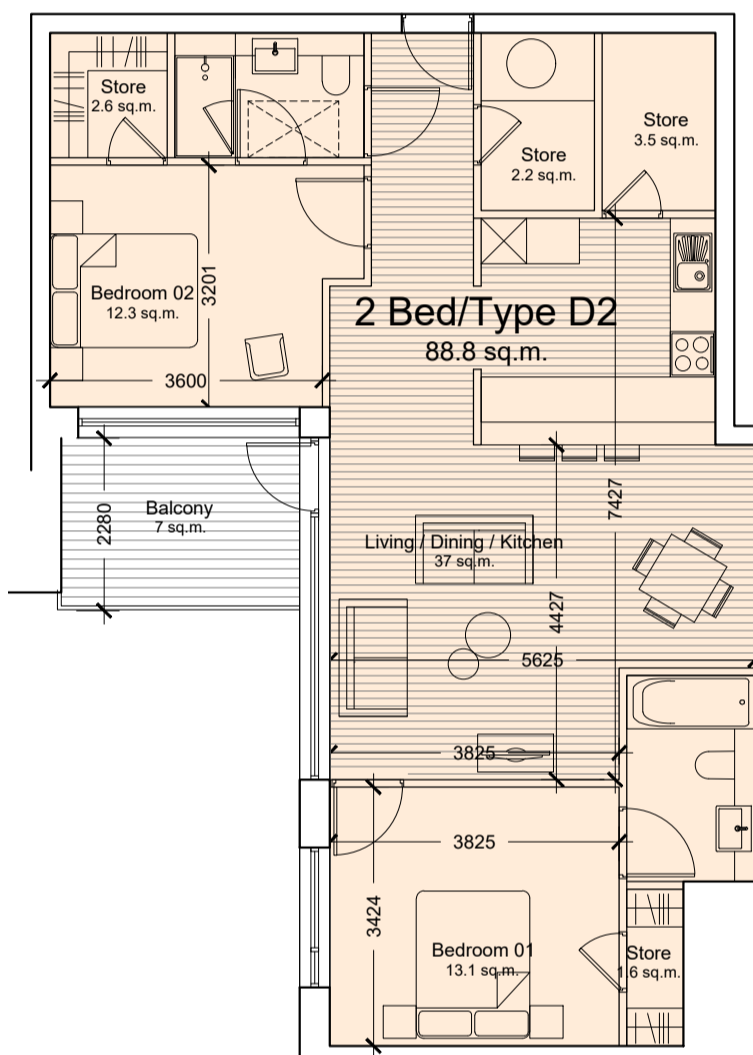
**1 Bed/Type C1**  
50.3 sq.m.  
Total No.= 1(5th floor)



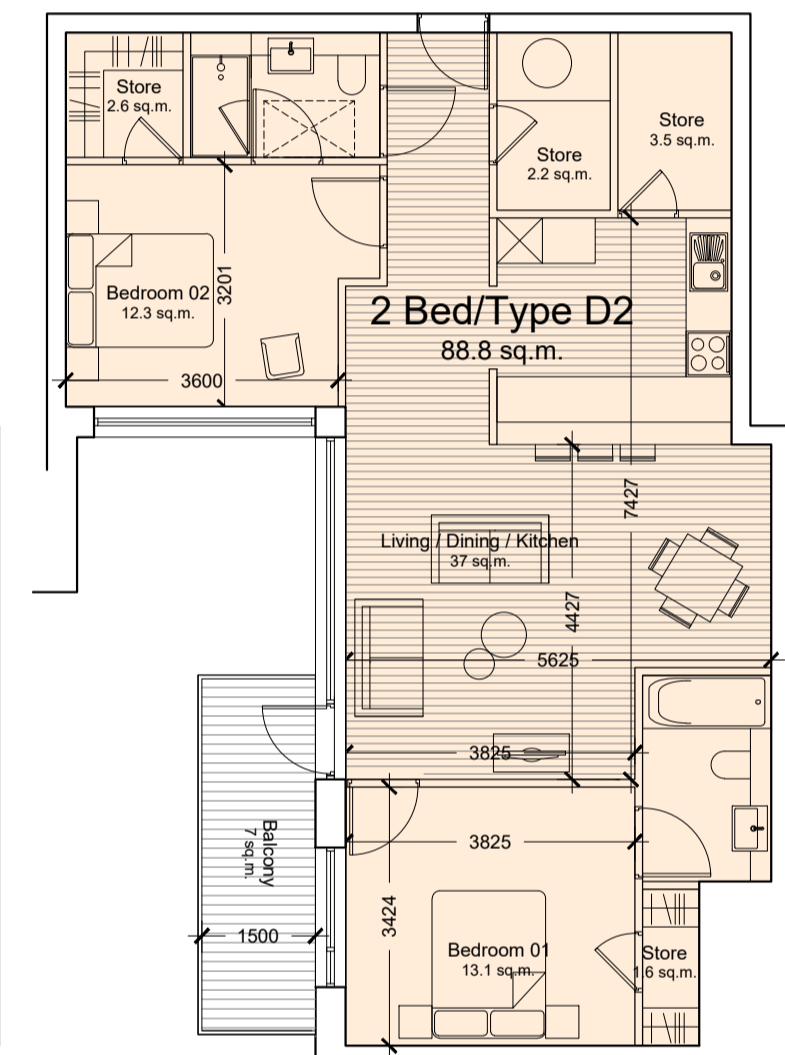
**2 Bed/Type C2**  
83.3 sq.m.  
Total No.= 4



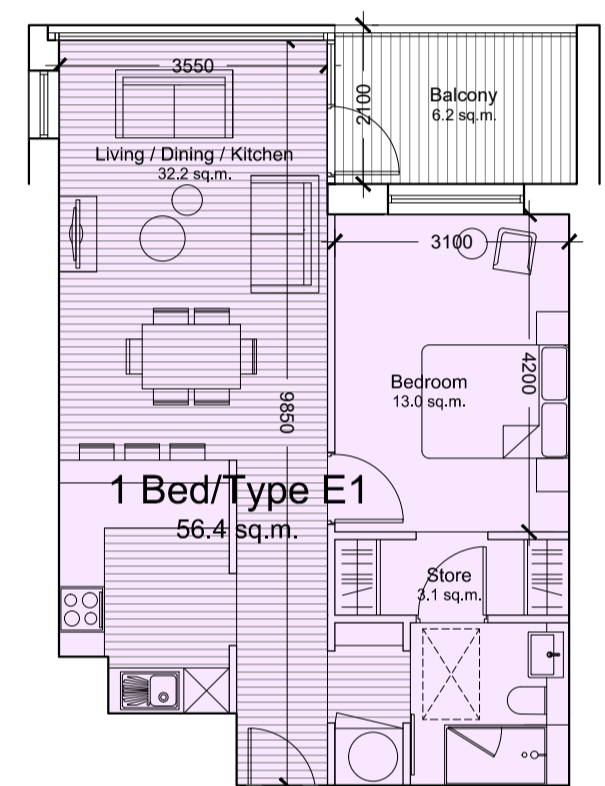
**1 Bed/Type D1**  
55 sq.m.  
Total No.= 4



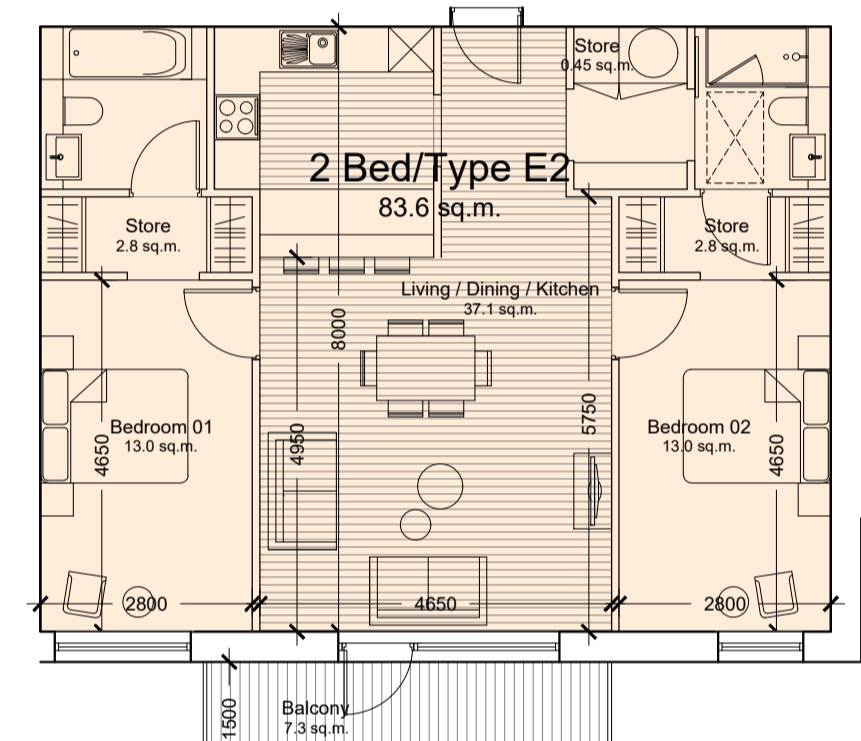
**2 Bed/Type D2**  
88.8 sq.m.  
Total No.= 6



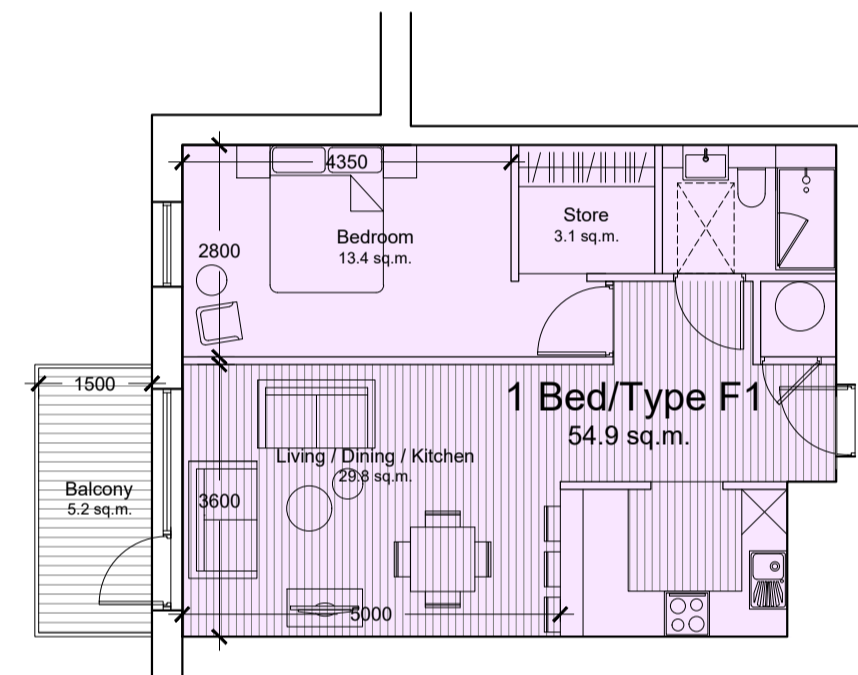
**2 Bed/Type D2**  
Alternative balcony position  
88.8 sq.m.  
Total No.= 4



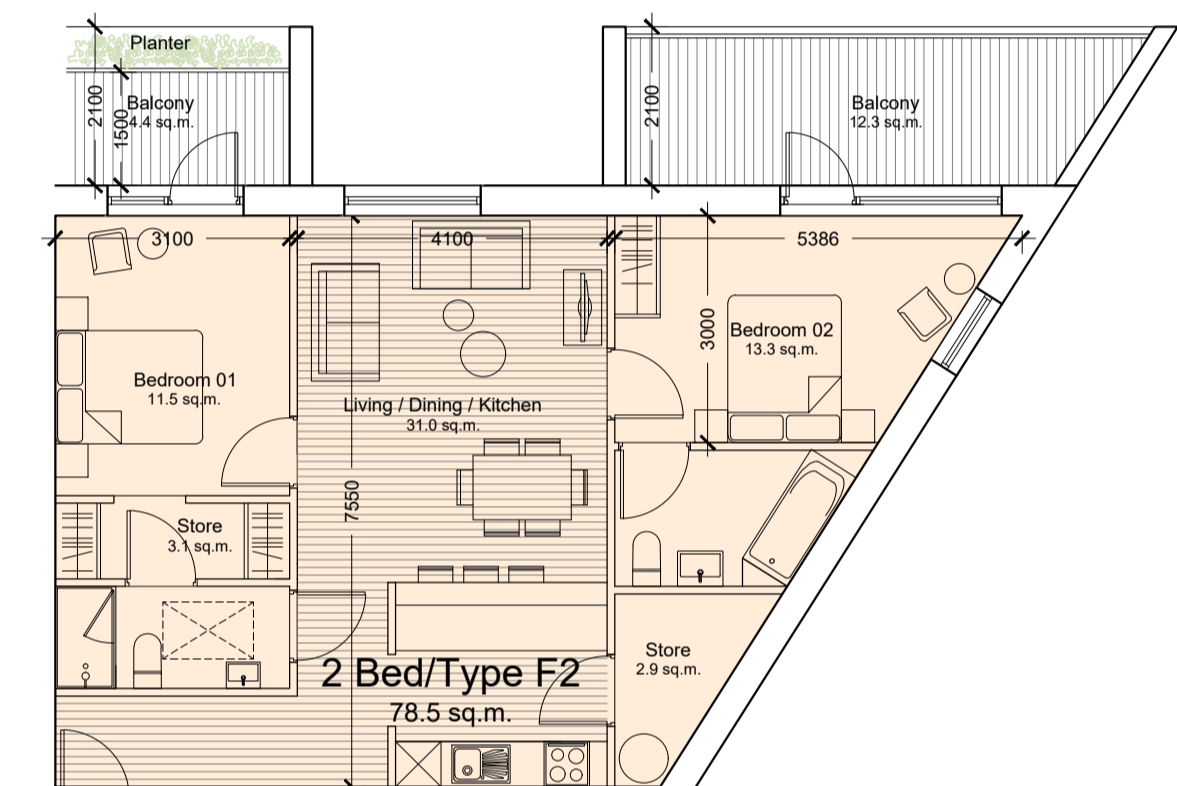
**1 Bed/Type E1**  
56.4 sq.m.  
Total No.= 8



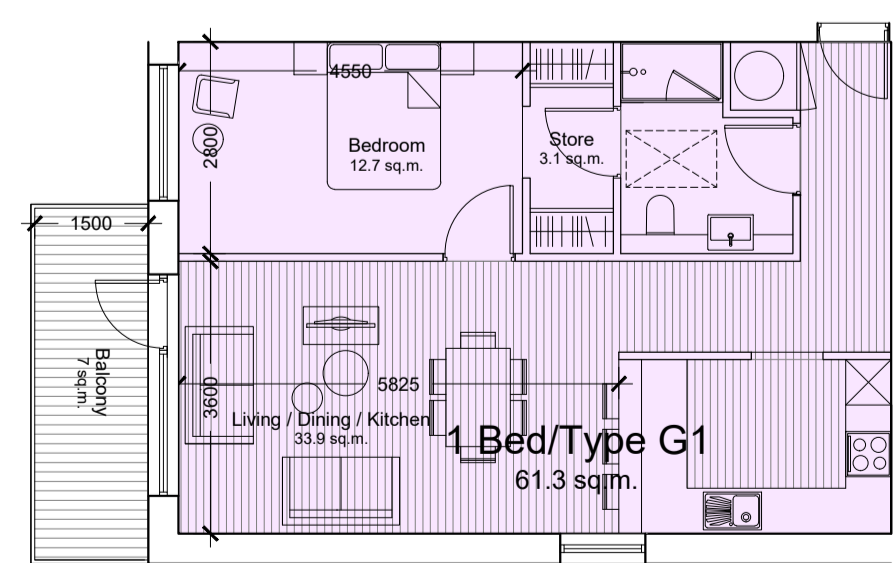
**2 Bed/Type E2**  
83.6 sq.m.  
Total No.= 1(Ground floor)



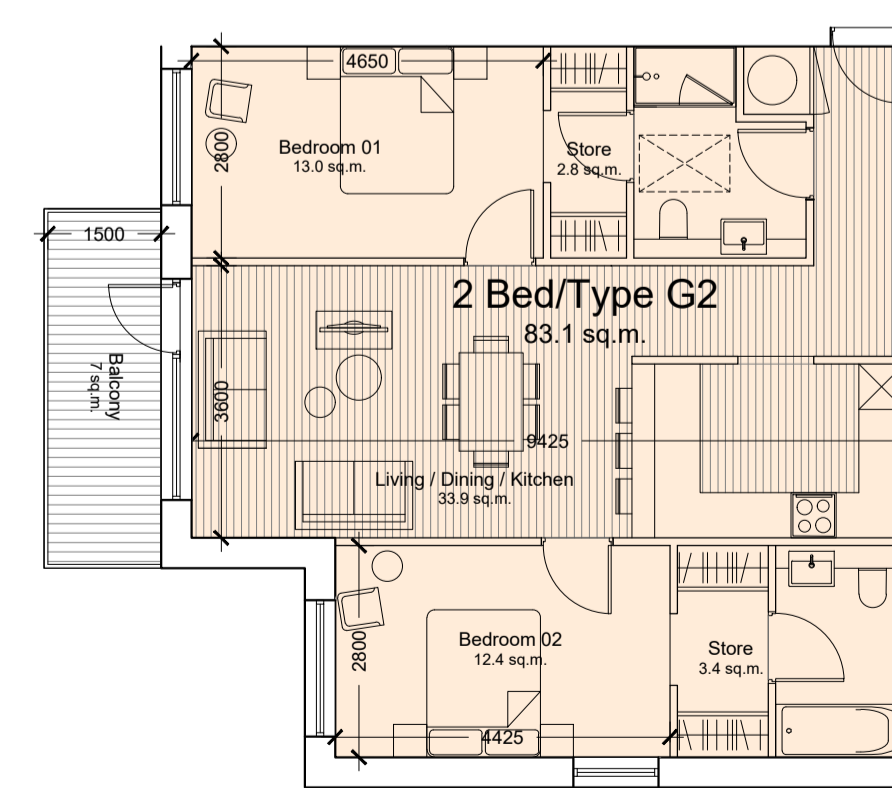
**1 Bed/Type F1**  
54.9 sq.m.  
Total No.= 6



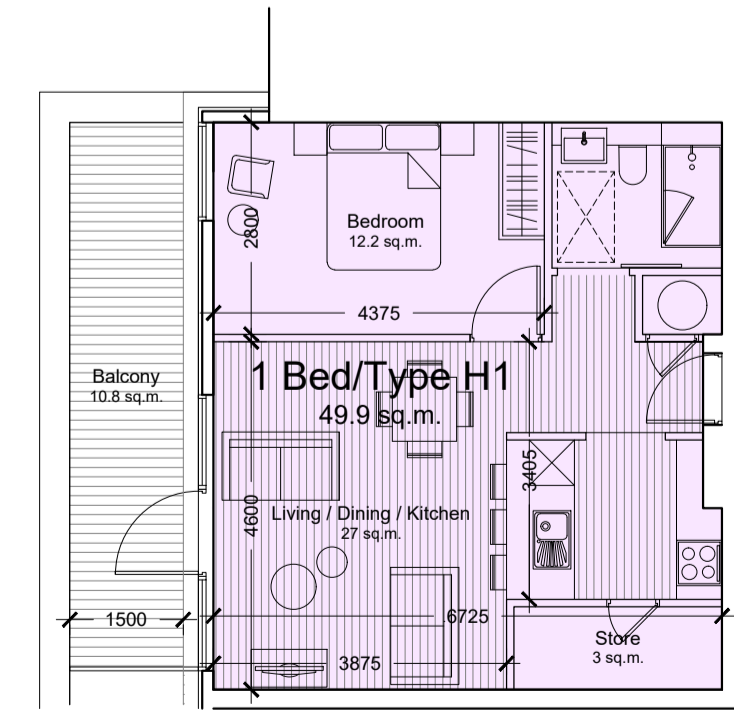
**2 Bed/Type F2**  
78.5 sq.m.  
Total No.= 4



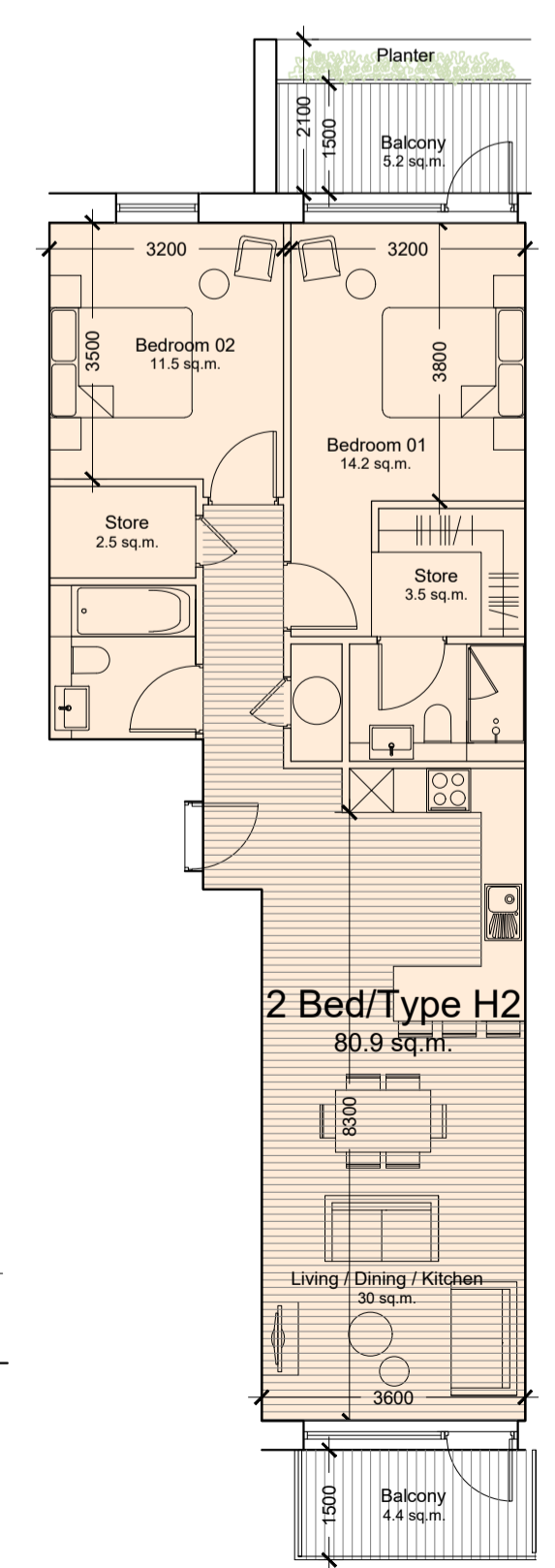
**1 Bed/Type G1**  
61.3 sq.m.  
Total No.= 2



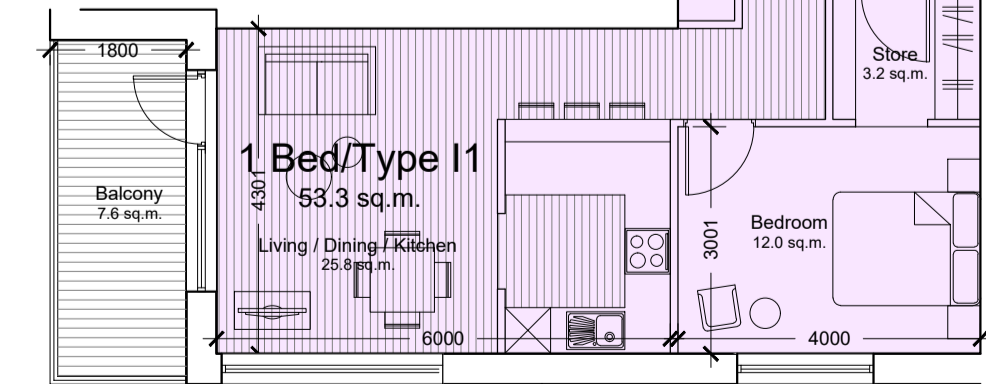
**2 Bed/Type G2**  
83.1 sq.m.  
Total No.= 4



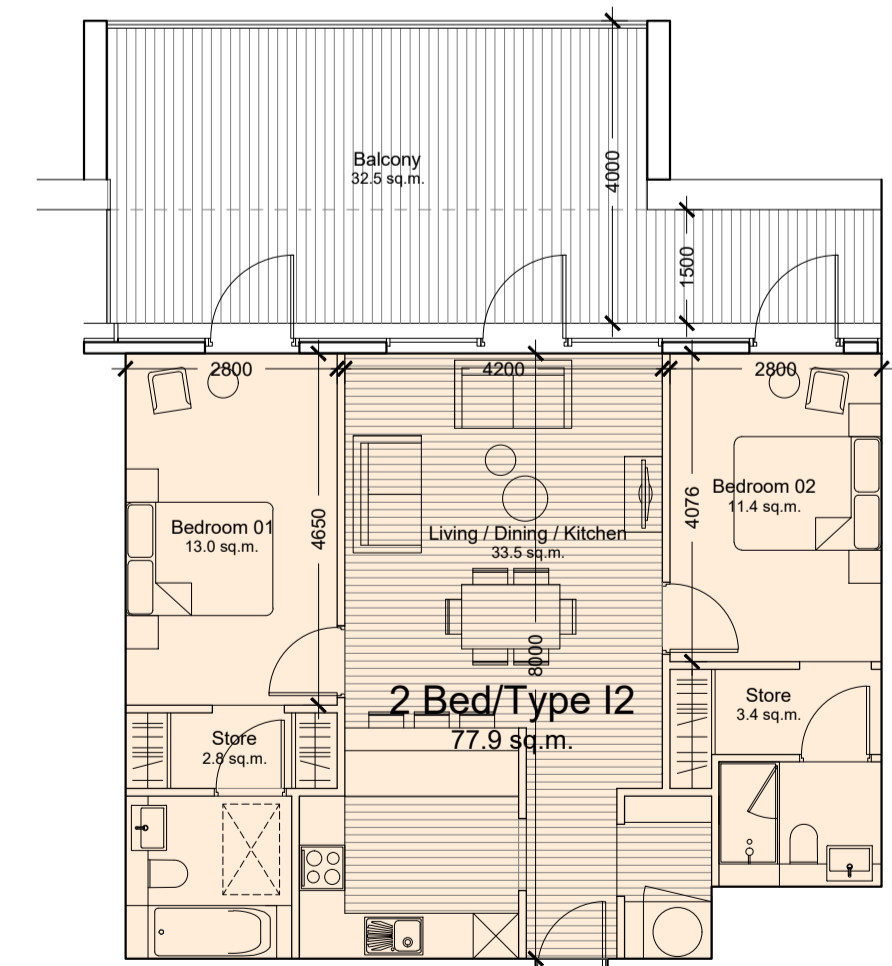
**1 Bed/Type H1**  
49.9 sq.m.  
Total No.= 2



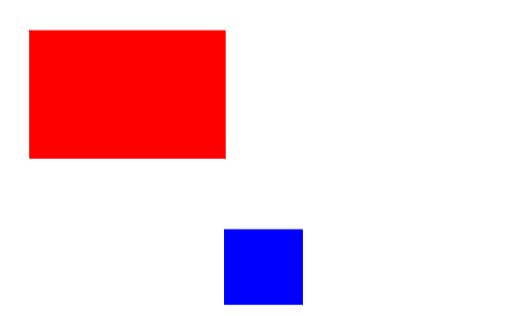
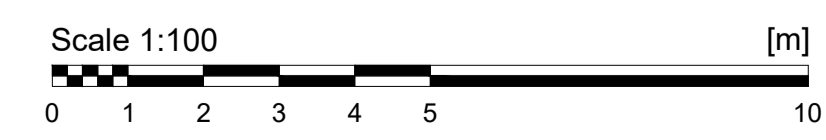
**2 Bed/Type H2**  
80.9 sq.m.  
Total No.= 10



**1 Bed/Type I1**  
53.3 sq.m.  
Total No.= 1(4th floor)



**2 Bed/Type I2**  
77.9 sq.m.  
Total No.= 1(5th floor)



**JOHN FLEMING ARCHITECTS**  
THE TREE HOUSE, 17 RICHVIEW OFFICE PARK, DUBLIN 14  
T: (01) 6669888 E: info@jfa.ie W: www.jfa.ie

CLIENT  
Maxol Property Limited

PROJECT  
Beach Road Apartments  
Maxol Petrol Filling Station & former Michael Grant Motors, Beach Road, D4

DRAWING  
Apartment Types

SCALE  
1:100@A1

JOB NO.  
1738

DRAWN BY  
IC

DATE  
May 2021

DRAWING NUMBER  
P-9-100

REVISION

DRAWING LOCATION  
c:\users\jfa\working\beach\1738\dwg

DRAWING STATUS  
PLANNING